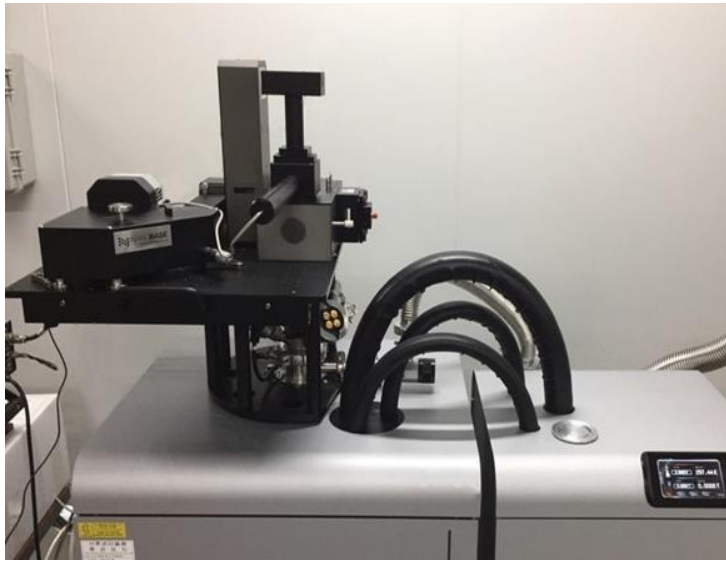


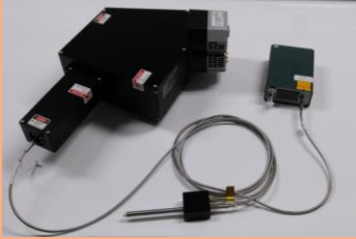
# NANOBASE



## CUSTOMIZATION GUIDE



This fraction of our 130+ customization projects ensures how your dreams can come true with us.



### **Electrolyte and anode material oxidation reaction real-time measuring device**

Customer : Sogang University

- Featuring F1.4 Raman Spectrometer and Raman probe
- Customized Raman probe tip which can be dipped into solution



### **CVD coupled Raman system**

Customer : Korea Institute of Industrial Technology

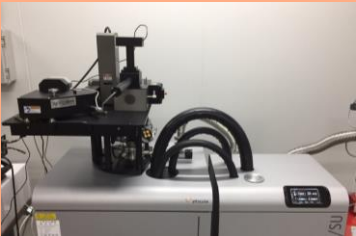
- Real-time Raman spectroscopy of materials produced in the CVD chamber
- Objective lens cover and Impeccably sealed probe for protection against exposure to chemical materials



### **Raman / photocurrent system with probe station**

Customer : Samsung Advanced Institute of Technology, GIST, SKKU

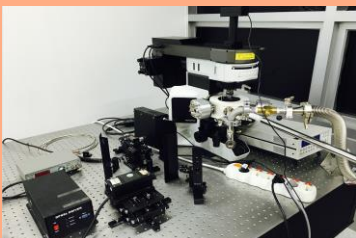
- Featuring supercontinuum laser source
- XperRAM S Series customized for study on the electrical and optical properties of wire bonded material such as Si wafer



### **Cryostat coupled Raman system**

Customer : SKKU

- Cryogen free 1.5L cryostat coupled with superconducting magnet system and Raman system conducts tests in 4K temperature environment
- 2D Raman imaging using Piezo actuator



### **Cryostat coupled photocurrent System**

Customer : SKKU

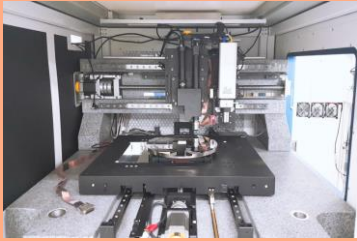
- Photocurrent imaging in the cryostat
- Cryostat integrated on the microscope stage
- No sample movement while mapping process



### **Cell counting Raman System**

Customer : Yonsei University

- Micro Raman system integrated with cell fluidic sorting system
- Raman system detects a cell if each cell spectrum and size falls within a pre-set range, and Raman system also distinguishes cells and particles



### WLI module coupled with AFM system

Customer : Park Systems

- Our WLI module integrated with counterparty's AFM system to enhance surface measurement capabilities



### Indoor/outdoor portable Raman spectroscopy system

Customer : Korean National Research Institute of Cultural Heritage

- For outdoor use : comes in a portable case with 473, 532, 633nm lasers
- For indoor use : mountable on a specially designed microscope station for micro Raman analysis



### Macro Raman system for gas emission measurement

Customer : Chung-Ang University

- Macro Raman system with a sample stage
- Featuring 532nm excitation source
- This system is optimized for battery material manufacturing research

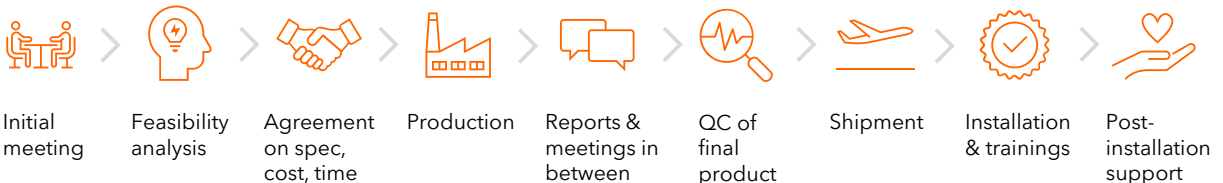
## CUSTOMIZABILITY SCOPE

Seriously, we live for challenges of making things happen with and for our customers.

- Integration of our instruments with other functionalities
- Integration of our modular product parts with your own lasers, spectrometers, microscopes, etc
- Design of instruments involving modification of laser beam paths
- Much more possibilities (just ask us!)

## CUSTOMIZATION PROCESS

You will be in close contact with us during the whole customization process.



## CUSTOMIZABLE PRODUCTS

We specialize in tailor-making instruments for the following technologies :

- Raman spectrometry
- Raman spectroscopy
- Fluorescence lifetime imaging/measurement
- Photocurrent imaging/measurement
- Interferometric profiling / WLI
- Battery cycling



## CUSTOMIZATION GUIDE

**NANOBASE**

**HQ** #1406-1, 196 Gasan-digital-1-ro,  
Geumcheon-gu, Seoul 08502  
South Korea

**Hotline** +82 70 8666 0233  
**Fax** +82 2 852 9013

**E-mail** [nbsales@nanobase.co.kr](mailto:nbsales@nanobase.co.kr)  
**Web** [www.nanobase.co.kr](http://www.nanobase.co.kr)